



ScanExpress Viewer

Visual Fault Diagnostics and Repair System



A picture is worth a thousand words.

ScanExpress Viewer™ is a printed circuit board (PCB) CAD data & photograph visualization tool for boundary-scan test development, electronic manufacturing test, and product repair environments.

When combined with ScanExpress ADO™ (Advanced Diagnostics Option) for detailed results from ScanExpress Runner™, ScanExpress Viewer displays fault coordinates and connected traces superimposed directly on a board photograph or CAD layout diagram for expedient repair.

No more searching for coordinates or hunting through layout files—ScanExpress Viewer shows exactly where to find faults, even those hidden underneath components.

Benefits

Save time and effort at the repair station by visually identifying probable fault.

Decrease expertise requirements with easy-to-read, graphical fault indicators based on advanced boundary-scan diagnostics.

Ordering Information

Part Number—20315

For more information about this product, please visit the ScanExpress Viewer website at:

www.corelis.com/viewer



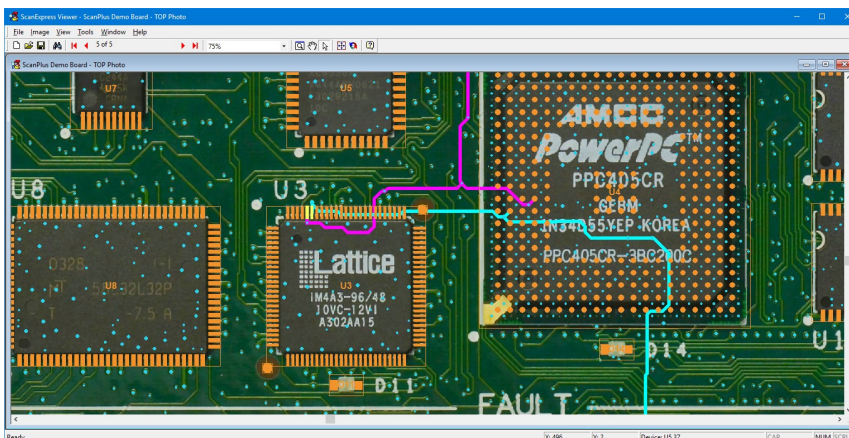
13100 Alondra Blvd.
Cerritos, CA 90703, USA

US & Canada	+1 888-808-2380
International	+1 562-926-6727
Fax	+1 562-404-6196

Revolutionize the way you think about test

Features

- Visualization of PCB assembly faults with CAD data superimposed on a photograph
- Failure list identifies fault types such as stuck at, open, or short
- Filtering to display or hide components, through-holes, vias, traces, & pads
- Intuitive controls for zoom, pan, and auto-center functions
- Operates as a standalone PCB viewer or integrates with ScanExpress Runner for visual analysis of fault diagnostics
- Integrated wizard assists with photograph calibration and alignment
- Fully compatible with the Corelis ScanExpress™ family of products
- Works with Windows Vista, Windows 7, Windows 8/8.1, & Windows 10



ScanExpress Viewer reads fault logs from ScanExpress Runner and highlights relevant devices, pins, and traces.

Applications

- **Development** - Debug and visualize prototype hardware faults, even on component pins with no physical access.
- **Production** - Pinpoint manufacturing defects for expedient diagnosis & repair.
- **Service & Repair** - Instantly identify and locate failures on returned PCBs or in the field using powerful JTAG tools.

Learn More: For more information about Corelis products, please visit www.corelis.com